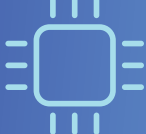


中央环境数据库

CENTRALISED ENVIRONMENTAL DATABASE



由环保署开发的「中央环境数据库」提供整体环境资源及环评数据的地理资讯平台，当中汇集空气质量、水质、噪音及生态等数据和电脑模拟工具，以协助项目倡议人及环评顾问在工程项目早期规划阶段减低对环境的不利影响及拟议合适的缓解方法，并大大缩短环评研究所需要时间。

The Centralised Environmental Database (CED) developed by EPD provides comprehensive Geotechnical Information System (GIS) and environmental resources for compiling environmental impact assessment (EIA) studies. The CED encompasses data including air quality, water quality, noise, ecological data etc. as well as modelling tools to facilitate project proponents and their consultants at the early project planning stage to avoid environmental impacts and propose mitigation measures, and hence the time required for EIA studies can be shortened.

- 于 2022 年 12 月推出
Launched in Dec 2022
- 100+ 空间数据图层
Spatial Data Layers
空气 Air
噪音 Noise
水质 Water
土地污染 Land contamination
景观及视觉 Landscape and visual
环境规划及评估
Environmental planning and assessment
危险评估 Hazard
生态 Ecology
渔业 Fisheries
- 80+ 登记用户
Registered Accounts
政府部门 e/ps
项目倡议人 Project proponents
学者 Academics
环评顾问 EIA consultants
- 智慧工具
Smart Tools
仪表板 Dashboards
场地分析 Site analysis
线上评估 On-line assessment
导入建筑信息模型 BIM visualization

数据库的应用工具

TOOLS AND APPLICATIONS

仪表板 DASHBOARD

- 追踪、分析和可视化生态和环境监测数据(例如海洋生物出没纪录等)
To track, visualise and analyse occurrence-based monitoring data (e.g. dolphin sighting records)

场地分析及比较 SITE ANALYSIS AND COMPARISON

- 分析及比较不同项目设计方案的环境限制，协助在早期规划阶段判别对环境影响最少的设计
Analyse and compare the environmental constraints of different design options to help identify favorable design which has minimal environmental impact at early planning stage

线上评估工具 ONLINE ASSESSMENT TOOL

- 直接利用数据库中的资料对工程项目可能引致的空气和噪音影响作初步评估
Directly use CED datasets to conduct preliminary air and noise assessment for projects

导入建筑信息模型 COMPATIBLE WITH BIM MODELS

- 支持导入建筑信息模型以助了解项目的细节和对景观及视觉的影响
Capable of importing BIM models to help understand the project details and the potential landscape and visual impacts

