

Dolphin

Effective Indoor Positioning Service 有效的室內定位系統

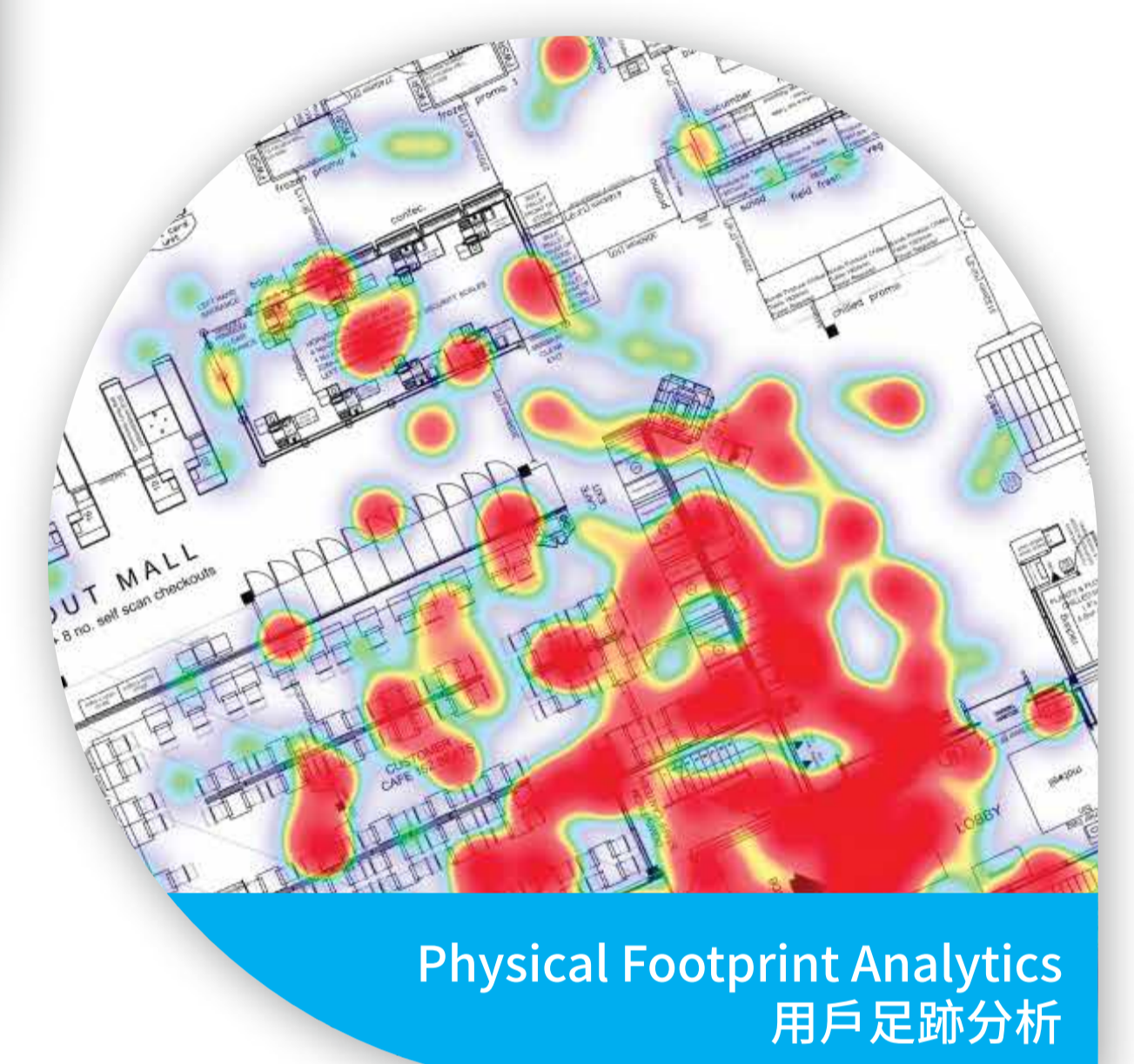
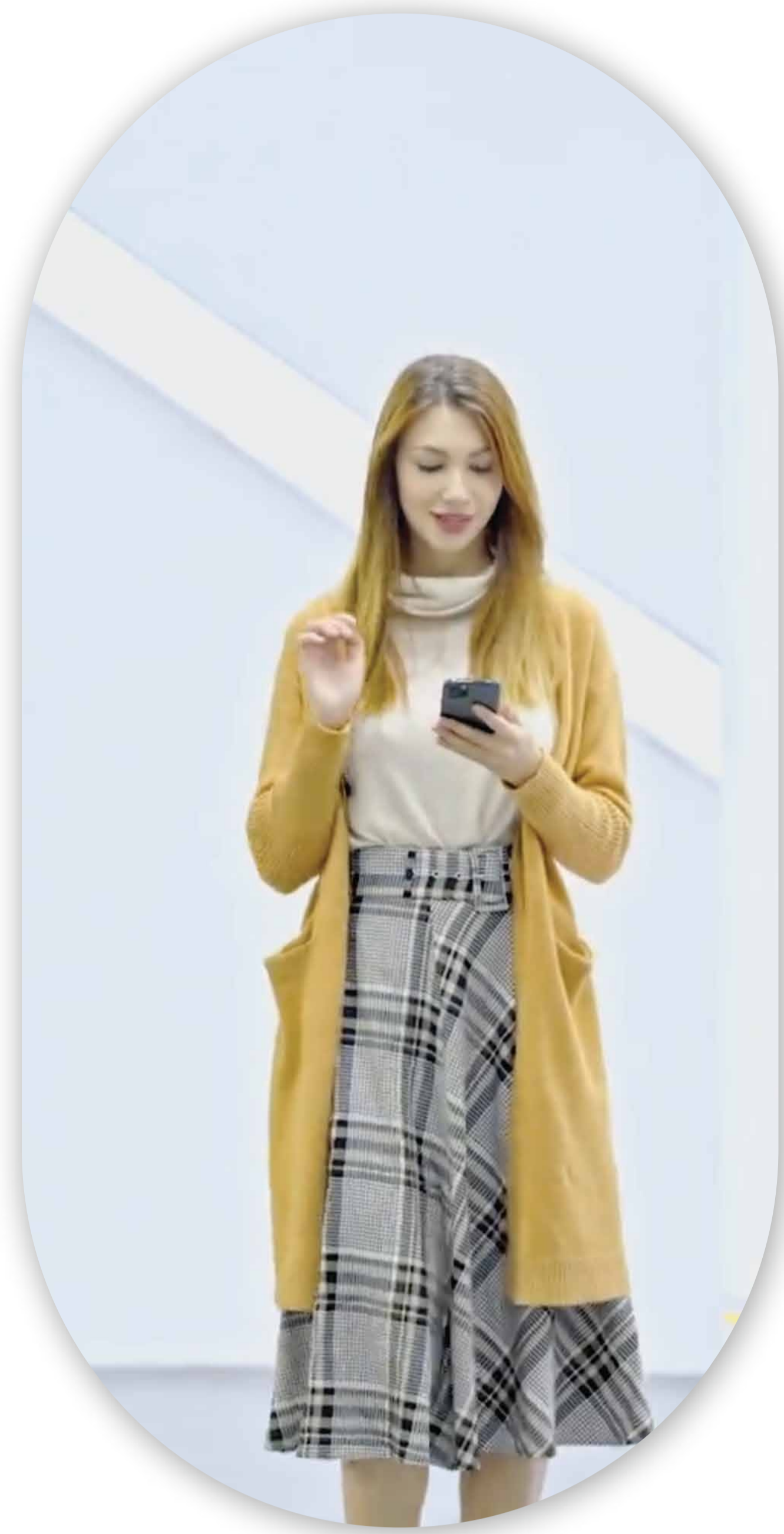
Inventors: Mr. Gary CM LEUNG, Dr. Daniel PK LUN, Dr. Ivan WH HO

A new IPS (Indoor Positioning System) solution that helps users detect their locations, search for & navigate to destinations accurately.

"Dolphin" uses BLE beacons with a newly developed location algorithm and Co-operative Positioning algorithm to provide indoor positioning & navigation with accuracy within 3 meters, even in areas with no or insufficient beacon signal.

新的IPS(室內定位系統)解決方案可幫助用戶檢測位置，準確搜索並導航至目的地。

"Dolphin"將藍牙信標與最新開發的位置算法和合作定位算法配合使用，即使在沒有信號或信號不足的區域，也可以提供3米以內的室內定位和精密導航。



Demo 示範



US Provisional Patent Application No. 62/912,674
Hong Kong Standard Patent Application No. 42021030478.8
China Official Patent Application No. 202010858445.9